

# 90° SNAP<sup>2</sup>IT<sup>®</sup> MC Cable Connectors

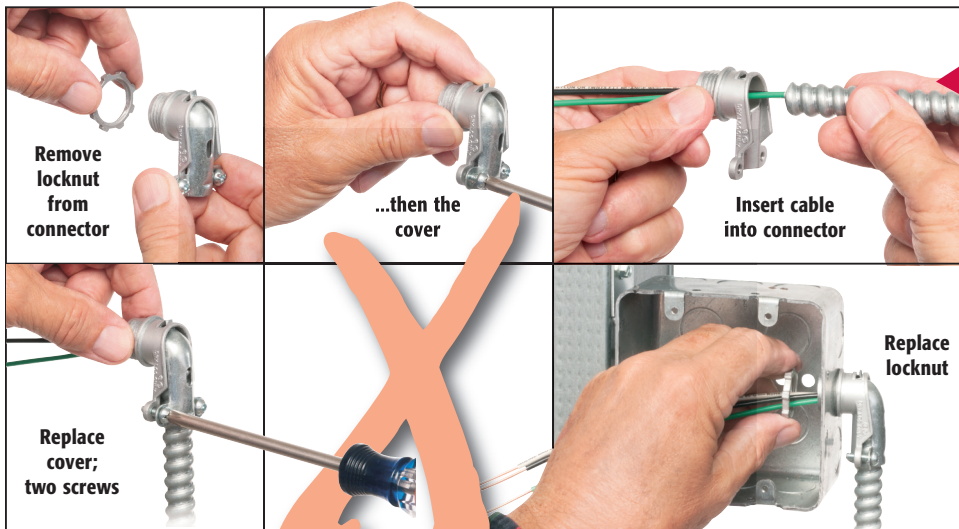
Made in USA 

**MORE**  
on  
reverse

*Easy Snap-in Insertion • No Tools...Saves Time*



**AT THE SAME COST PER CONNECTOR!**



Arlington's new **90 DEGREE SNAP<sup>2</sup>IT<sup>®</sup>** fittings are *easy to insert* – and handle the widest variety of cables!

- **Widest total cable ranges**  
Our 90° Snap<sup>2</sup>It<sup>®</sup> connectors accommodate cables from 14/2 to 10/3.
- **Widest variety of cables**  
For AC, MC, HCF, MC continuous corrugated aluminum cable, MCI-A cables (steel and aluminum), AC90 and ACG90.
- **Super-secure installation**  
No pullout!
- **Easy, screwdriver removal**  
from box; connector is reusable
- **Fully assembled – Ready to use**  
with and without insulated throat



See installation instructions on reverse.

**EASY to INSTALL**  
**90° Snap2It Connector**  
**Saves Time!...and**  
**Costs the Same as a**  
**2-screw 90° Connector**

**Eliminates**  
**multiple steps of**  
**2-screw connector**

**A**<sup>®</sup>   
**Arlington**

1 Stauffer Industrial Park  
Scranton, PA 18517  
800/233.4717  
Fax 570/562.0646  
[www.aifittings.com](http://www.aifittings.com)

# 90° SNAP2IT® MC Cable Connectors

Made in USA 

*Easy  
Snap-in  
Insertion*

**1**  
**BEND WIRES**  
**AS SHOWN**  
**FOR EASY**  
**INSERTION**

**2**  
**INSERT**  
**CABLE**  
**INTO**  
**FITTING**

**3**  
**SNAP**  
**ASSEMBLY**  
**INTO BOX**



38900ST



38900AST  
with insulated  
throat



40900ST  
tinted red  
inside



40900AST  
with insulated  
throat and  
red tint inside

## 90° Snap2It® Connectors

| CATALOG NUMBER | UPC/DCI/NAED MFG #01 8997 | CABLE TYPE   | DIAMETER RANGE | CABLE RANGE                        | UNIT PKG | STD PKG |
|----------------|---------------------------|--|----------------|------------------------------------|----------|---------|
| 38900ST        | 04098                     | <b>MC/HCF/AC</b> Steel & Aluminum                      | .405 to .605   | 14/2 and 12/2                      |          |         |
| 38900AST       | 04093                     | <b>MCI-A</b> Steel & Aluminum                          | .440 to .550   | w/ and w/o ground                  |          |         |
|                |                           | <b>AC90, ACG90</b>                                     | .440 to .550   | 14/3, 14/4, 12/3, 12/4, 10/2, 10/3 | 25       | 250     |
|                |                           | <b>Flexible Metal Conduit</b> Steel & Aluminum (RWFMC) | 3/8" Flex*     |                                    |          |         |

\*CSA Listed w/ anti-short bushing ONLY

## Tinted red inside fitting

| CATALOG NUMBER | UPC/DCI/NAED MFG #01 8997 | CABLE TYPE   | DIAMETER RANGE | CABLE RANGE            | UNIT PKG | STD PKG |
|----------------|---------------------------|--|----------------|------------------------|----------|---------|
| 40900ST        | 04099                     | <b>MC/HCF/AC</b> Steel & Aluminum                      | .485 to .610   | 14/3, 12/2 and 12/3    |          |         |
| 40900AST       | 04092                     | <b>MCI-A</b> Steel & Aluminum                          | .480 to .580   | w/ and w/o ground      |          |         |
|                |                           | <b>AC90, ACG90</b>                                     | .480 to .550   | 14/4, 12/4, 10/2, 10/3 | 25       | 250     |
|                |                           | <b>Flexible Metal Conduit</b> Steel & Aluminum (RWFMC) | 3/8" Flex*     |                        |          |         |

\*CSA Listed w/ anti-short bushing ONLY



**Arlington**

1 Stauffer Industrial Park  
Scranton, PA 18517  
800/233.4717  
Fax 570/562.0646  
www.aifittings.com

***COSTS THE SAME AS A 2-SCREW  
90° CONNECTOR!***

Distributed by

Patent pending

# 90° SNAP<sup>2</sup>IT<sup>®</sup> MC Cable Connectors

Made in USA 

**MORE**  
on  
reverse

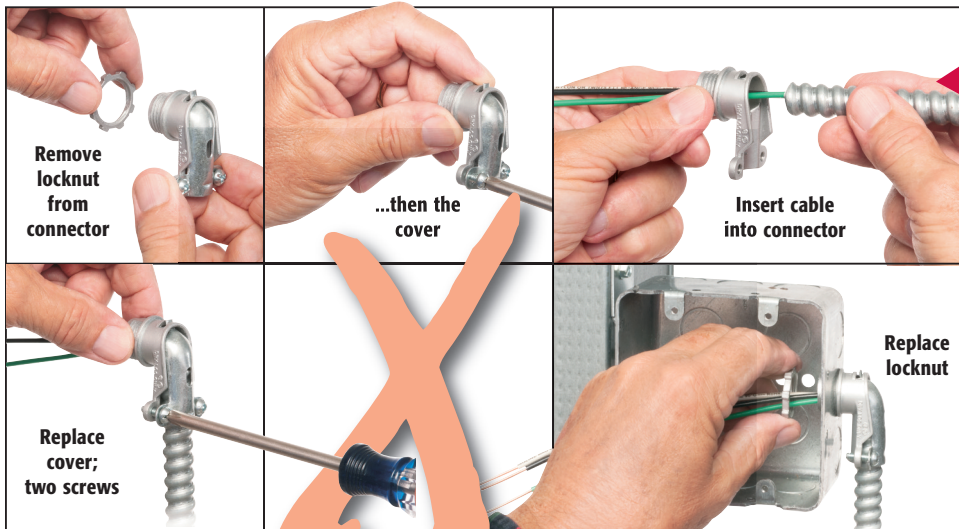
*Easy Snap-in Insertion • No Tools...Saves Time*



**SAVE 1 Minute**  
per connector...

over 90° 2-screw  
MC connectors!

**AT THE SAME COST PER CONNECTOR!**



Arlington's new **90 DEGREE SNAP<sup>2</sup>IT<sup>®</sup>** fittings are *easy to insert* – and handle the widest variety of cables!

- **Widest total cable ranges**  
Our 90° Snap<sup>2</sup>It<sup>®</sup> connectors accommodate cables from 14/2 to 10/3.
- **Widest variety of cables**  
For AC, MC, HCF, MC continuous corrugated aluminum cable, MCI-A cables (steel and aluminum), AC90 and ACG90.
- **Super-secure installation**  
No pullout!
- **Easy, screwdriver removal**  
from box; connector is reusable
- **Fully assembled – Ready to use**  
with and without insulated throat



See installation instructions on reverse.

**EASY to INSTALL**  
**90° Snap2It Connector**  
**Saves Time!...and**  
**Costs the Same as a**  
**2-screw 90° Connector**

**Eliminates**  
**multiple steps of**  
**2-screw connector**

**A**<sup>®</sup>   
**Arlington**

1 Stauffer Industrial Park  
Scranton, PA 18517  
800/233.4717  
Fax 570/562.0646  
[www.aifittings.com](http://www.aifittings.com)

# 90° SNAP2IT® MC Cable Connectors

Made in USA 

*Easy  
Snap-in  
Insertion*

**1**  
**BEND WIRES  
AS SHOWN  
FOR EASY  
INSERTION**

**2**  
**INSERT  
CABLE  
INTO  
FITTING**

**3**  
**SNAP  
ASSEMBLY  
INTO BOX**



38900ST



38900AST  
with insulated  
throat



40900ST  
tinted red  
inside



40900AST  
with insulated  
throat and  
red tint inside

## 90° Snap2It® Connectors

| CATALOG NUMBER | UPC/DCI/NAED MFG #01 8997 | CABLE TYPE   | DIAMETER RANGE | CABLE RANGE                        | UNIT PKG | STD PKG |
|----------------|---------------------------|--|----------------|------------------------------------|----------|---------|
| 38900ST        | 04098                     | <b>MC/HCF/AC</b> Steel & Aluminum                      | .405 to .605   | 14/2 and 12/2                      |          |         |
| 38900AST       | 04093                     | <b>MCI-A</b> Steel & Aluminum                          | .440 to .550   | w/ and w/o ground                  |          |         |
|                |                           | <b>AC90, ACG90</b>                                     | .440 to .550   | 14/3, 14/4, 12/3, 12/4, 10/2, 10/3 | 25       | 250     |
|                |                           | <b>Flexible Metal Conduit</b> Steel & Aluminum (RWFMC) | 3/8" Flex*     |                                    |          |         |

\*CSA Listed w/ anti-short bushing ONLY

## Tinted red inside fitting

| CATALOG NUMBER | UPC/DCI/NAED MFG #01 8997 | CABLE TYPE   | DIAMETER RANGE | CABLE RANGE            | UNIT PKG | STD PKG |
|----------------|---------------------------|--|----------------|------------------------|----------|---------|
| 40900ST        | 04099                     | <b>MC/HCF/AC</b> Steel & Aluminum                      | .485 to .610   | 14/3, 12/2 and 12/3    |          |         |
| 40900AST       | 04092                     | <b>MCI-A</b> Steel & Aluminum                          | .480 to .580   | w/ and w/o ground      |          |         |
|                |                           | <b>AC90, ACG90</b>                                     | .480 to .550   | 14/4, 12/4, 10/2, 10/3 | 25       | 250     |
|                |                           | <b>Flexible Metal Conduit</b> Steel & Aluminum (RWFMC) | 3/8" Flex*     |                        |          |         |

\*CSA Listed w/ anti-short bushing ONLY



**Arlington**

1 Stauffer Industrial Park  
Scranton, PA 18517  
800/233.4717  
Fax 570/562.0646  
www.aifittings.com

***COSTS THE SAME AS A 2-SCREW  
90° CONNECTOR!***

Distributed by

Patent pending