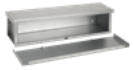




ELLIOTT ELECTRIC SUPPLY

We Deliver...Lower Cost, Quality Products, & Personal Service

12555 Harris Branch Pkwy Suite 105
78653-0000, TX Manor
Phone: 512-339-8750
Fax: 512-339-6732



F121248RTGV 12X12X48 N3R GLV SC

Hoffman Enclosures, Inc.

Catalog Number	F121248RTGV
Manufacturer	Hoffman Enclosures, Inc.
Description	Econo Trough, Screw Cover, Gray, Steel, 48 In Overall Length, 12 In Overall Height, 12 In Overall Width, Unpainted Galvanized, 14, 62 LB
Weight per unit	62.0 (lbs/each)
Product Category	Nema Type 3R Trough & Gutter

Dimensions and Weight

Depth	48
Size	12.00x12.00x48.00 in
Width	12

Descriptions

Description	12X12X48 N3R GLV SC
extra long description	NVENT HOF F121248RTGV Basic Galvize
Features	EconoTrough Galvanized Wiring Trough is used for protecting wire and cable distribution, junctions and terminations in outdoor applications that may be exposed to wet conditions. A Padlock Hasp Kit can be installed for increased security.

Manufacturer Information

Brand	Nvent Hoffman
GTIN	00783510138370
UPC	783510138370

Taxonomies, Classifications, and Categories

Category Description	STEEL WIRE WAY JUNCTION BOXES
Type	Commercial Wiring Troughs;Trough

Packaging

Carton	1
Weight Per each	62

Uses, Certifications, and Standards

nema rating	3R Weather-resistant, except dust
-------------	-----------------------------------